

Cast Steel Swing Check Valves (with internal hinge pin)

150/300/600UOCH • 150/300/600SCOHS

New structural design / Meets the latest standard



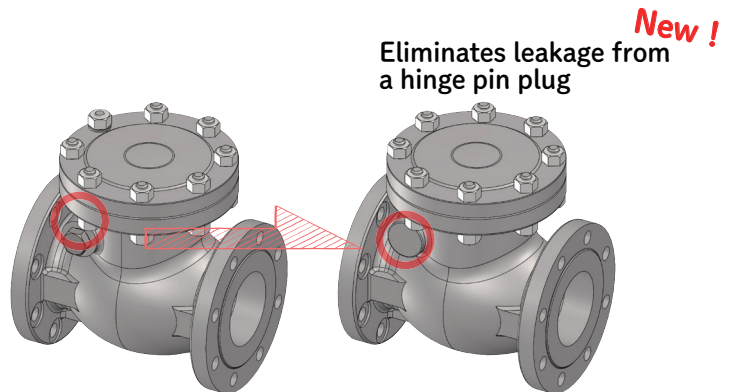
1. No risk of leakage from a hinge pin plug!
2. Anti rotation disc design!
3. Same face to face dimensions and flow characteristics as the current design!
4. Meets the latest editions API 594: 2017!

# Cast Steel Swing Check Valves (with internal hinge pin)

## 1 Plug-less design, reduces the risk of external leakage

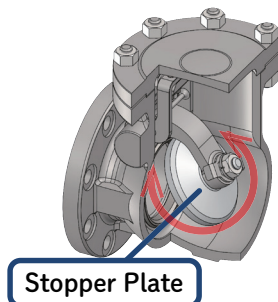
<Factors of external leakage from the plug>

- ① Deteriorating Gasket (stress relaxation)
- ② Loosening the plug by a vibration
- ③ Corrosion of the plug

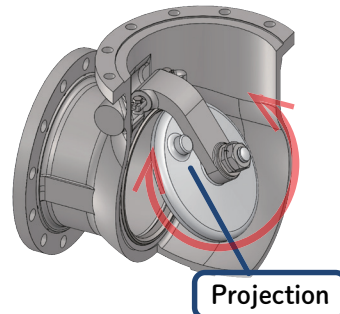


## 2 Anti-rotation disk reduces a wearing the disk and arm connection.

**New!** Optimized anti-rotation disk design per size prevent over 360° rotation



Size: 6" and smaller :  
Preventing rotation with stopper plate



Size: 8" and larger :  
Preventing rotation with a projection on the disk

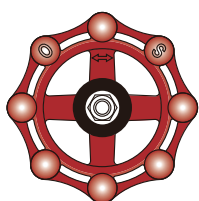
## 3 Same face to face dimensions and flow characteristics as the current design

## 4 Meets the latest standard API 594: 2017

### ● Product Range

△: Please contact KITZ

	Class	Product code	1 1/2	2	2 1/2	3	4	5	6	8	10	12	14	16	18
Stainless	150	150UOCH		○	○	○	○		○	○	○	○	△	△	△
	300	300UOCH		○		○	○		○	○	○	○	△		△
	600	600UOCH		○		○	○		○	○	○	○			
Cast Steel	150	150SCOHS	○	○	○	○	○	○	○	○	○	○	○	○	○
	300	300SCOHS	○	○	○	○	○	○	○	○	○	○	○	○	○
	600	600SCOHS		○	○	○	○		○	○	○	○			



ISO 9001 certified since 1989

**KITZ**

KITZ CORPORATION

- Distributed by -

International Business Development Dept.  
Tokyo Shiodome Building, 1-9-1, Higashi-Shimbashi,  
Minato-ku, Tokyo 105-7305, Japan  
Phone : +81-50-3649-2202